



Cable Glands

NPT, PG & Metric Threads ASI Cable Glands



ASI Cable Glands | Metric, PG & NPT Threads | IP65 Rating

Plastic ASI Cable Glands						
Part Number		Figure Number	A Mounting Hole Clearance	B Thread Length	C Wrench Flats	Thread Type
Gray	Black					
PCG-1/2-ASI	PCG-1/2-B-ASI	Figure 1	.825"	.591"	1.06"	1/2" NPT
PCG-1/2-2ASI	PCG-1/2-B-2ASI	Figure 2	.825"	.591"	1.06"	1/2" NPT
PCG-13.5-ASI	PCG-13.5-B-ASI	Figure 1	.825"	.354"	.945"	PG 13.5
PCG-13.5-2ASI	PCG-13.5-B-2ASI	Figure 2	.825"	.354"	.945"	PG 13.5
PCG-M20-ASI	PCG-M20-B-ASI	Figure 1	20.5 mm	8 mm	27 mm	M20x1.5
PCG-M20-2ASI	PCG-M20-B-2ASI	Figure 2	20.5 mm	8 mm	27 mm	M20x1.5
PCG-M25-ASI	PCG-M25-B-ASI	Figure 1	25.5 mm	8 mm	33 mm	M25x1.5
PCG-M25-2ASI	PCG-M25-B-2ASI	Figure 2	25.5 mm	8 mm	33 mm	M25x1.5

Metal ASI Cable Glands					
Part Number	Figure Number	A Mounting Hole Clearance	B Thread Length	C Wrench Flats	Thread Type
MCG-1/2-ASI	Figure 1	.825"	.591"	1.06"	1/2" NPT
MCG-13.5-ASI	Figure 1	.825"	.256"	.945"	PG 13.5
MCG-M20-ASI	Figure 1	20.5 mm	6 mm	22 mm	M20x1.5
MCG-M25-ASI	Figure 1	25.5 mm	7 mm	27 mm	M25x1.5
MCG-M25-2ASI	Figure 2	25.5 mm	7 mm	27 mm	M25x1.5

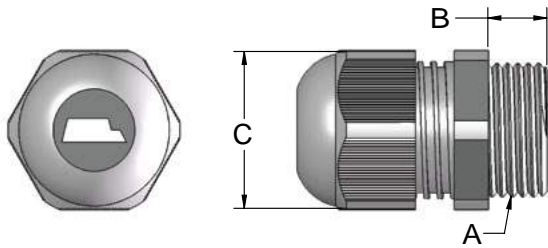


Figure 1: Single

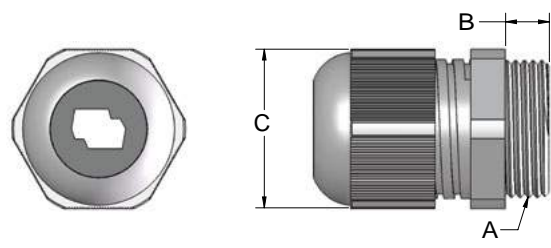


Figure 2: Double

Plastic Material:

Body: Polyamide
Seal: Neoprene

Metal Material:

Body: Nickel Plated Brass
Insert: Polyamide
Seal: Neoprene